



Direct Ophthalmoscopes

Keeler Direct Ophthalmoscopes

A combination of optical perfection, superb ergonomics and versatile features make Keeler direct ophthalmoscopes the ideal choice. Whatever your requirement from basic examination to detailed diagnosis, there is a Keeler ophthalmoscope for you.

The next couple of pages will guide your choice but first read on to discover the benefits shared by all Keeler ophthalmoscopes as standard.

Key features

• Keeler optical system

The more you see the better the diagnosis. Keeler's wide angle light beam and individual mirror alignment ensures that whatever the patient's pupil size, you will see the clearest view of the retina.

• Comfort and fit

With curved surfaces and subtle patient side marking, the contoured, curved ophthalmoscope head guarantees an optimal viewing angle and the smooth line surfaces ensure a patient friendly non-threatening instrument.

• Slimline handles

Keeler hand helds are supplied on a slimline, lightweight robust handle.

• Light, tough and built to last

Keeler ophthalmoscopes are built from resilient, lightweight materials to give you many years of trouble free service. High impact resistant covers combined with a strong, rigid chassis protect the carefully aligned optics.



A clearer view

• Controllable light for bright, clear images

The bright white LED, Halogen or Xenon illumination is fully adjustable from zero. This ensures the comfort of your patients and the best possible diagnosis for you.

• Reflex free images

Individually controlled optics reduce the effect of corneal reflex whilst minimising shadows and providing clearer retinal visualisation.



Apertures, graticules and filters

WIDE ANGLE - Illuminates the largest area of fundus for the best general diagnosis through a dilated pupil.

INTERMEDIATE - Easier access through undilated pupils and in peripheral examination. Ideal for paediatric examination.

MACULAR - For examination of the macular region of the fundus where a larger beam would create excessive pupillary reaction or patient discomfort.

SLIT - To determine retinal elevations and depressions, can also be used to assess anterior chamber depth.

GLAUCOMA - Projects a graticule onto the retina to assess the optic cup/disc ratio as an aid to glaucoma diagnosis.

FIXATION CROSS - Projects a graticule onto the retina for assessment of the degree and direction of eccentric fixation.

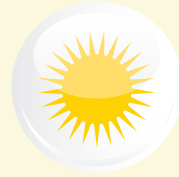
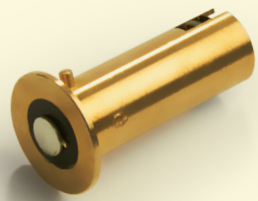
RED FREE AND FIXATION CROSS - For vessel examination with a fixation cross for assessment of eccentric fixation.

RED FREE - Used to examine blood vessels in fine detail. Blood vessels are silhouetted black against a dark green background.

COBALT BLUE - Use with fluorescein dye for the examination of corneal scars and abrasions.

LED Light Source

Keeler Direct Ophthalmoscopes are now available with a LED light source, giving bright, white illumination and 3 x longer lasting battery life.



Bright, white LED illumination



3 x Longer lasting battery life

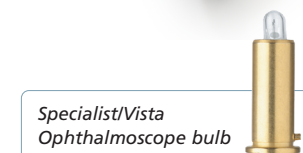
Battery Life	Battery will last 3 x longer with the LED light source than the existing filament bulb at maximum brightness before requiring a re-charge.
Patch Quality	Homogenous, sharp, clear patch.
Colour Temperature	3000K which equates to a neutral coloured patch.
CRI	High-CRI therefore colours are rendered more accurately.
Electronics	Uses the latest in LED technology.
Compatibility	The LED light source is compatible with the Specialist, Professional, Practitioner and Standard Keeler Ophthalmoscope heads and the 3.6V lithium ion rechargeable handle and the 2.8V primary cell handle.



Specialist

We recognise that illumination is of fundamental importance to good diagnosis. The re-engineered optics give 30% more illumination and because it is longer lasting, that means fewer bulb changes giving greater peace of mind.

- **The World's finest Direct Ophthalmoscope**
- **Lightweight and well balanced**
Almost 50% lighter, the Specialist combined with the slimline handle is perfectly balanced.
- **Expanded dioptr range**
The most comprehensive lens range available in a direct ophthalmoscope, +44D to -45D lens range guarantees optimal diagnosis in any situation.



Key features

- **30% more illumination**
Re-engineered optics give 30% more illumination to get through, for example, cloudy media and cataracts.
- **Slimmer optics**
Slimmer and enclosed viewing optics enable you to get closer to the eye providing a wider field of view.
- **Premium hand made optics**
The Morton Lens Track system, made up of individually ground glass lenses ensures an optimal view.
- **New Cobalt Blue filter**
The new blue filter can be used in conjunction with fluorescein dye for the detection and examination of corneal scars and abrasions.
- **Pupillometer gauge**
The pupillometer disc allows quick and easy estimation of pupil size.

Part Numbers

Specialist Ophthalmoscopes

- 1132-P-1157 3.6V Specialist Ophth (rechargeable) in case
- 1132-P-1149 2.8V Specialist Ophth in case
- 1132-P-1181 3.6V LED Specialist Ophth (rechargeable) in case
- 1132-P-1173 2.8V LED Specialist Ophth in case

Accessories

- 1011-P-7034 Spec/Vista halogen bulb 3.6V Pkt2
- 1011-P-7042 Spec/Vista halogen bulb 2.8V Pkt2
- 1011-P-7229 Spec/Vista LED bulb 2.8V/3.6V Pk1



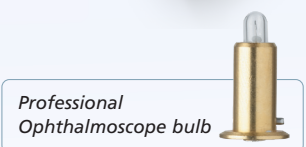
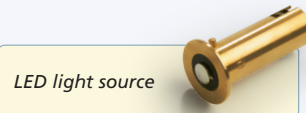
Professional

The Professional Ophthalmoscope has been designed to ensure ultimate control. Lenses, graticules and filters can all be introduced at the touch of a fingertip without the need to pull away from the patient.

- **Positive action maywheel and comprehensive lens range**

The positive action, easy access, maywheel not only allows you to dial up the required lens quickly, but also gives you total control of where you are in the lens range making each exam quicker and easier.

The extensive range of +29D to -30D in single dioptre steps ensures easy examination of all ocular structures and covers a wide range of patient/user prescriptions. A quick step swing of +/- 20D helps speed up diagnosis.



Key features

- **Choice of illumination**
The Professional now has a choice of Xenon or LED illumination for a brighter and whiter long lasting light. Giving you 3 x longer battery life.
- **Swing over filter**
The red free filter for enhanced vessel examination can be used in conjunction with any of the 6 diagnostic beams.
- **Brow rest**
The integral soft brow rest allows for easy positioning and protects your lenses if you are a spectacle wearer.



Part Numbers

Professional Ophthalmoscopes

- 1128-P-1014 3.6V Professional Ophth in case
- 1128-P-1015 3.6V LED Professional Ophth in case
- 1128-P-1013 2.8V Professional Ophth in case
- 1128-P-1008 2.8V LED Professional Ophth in case

Accessories

- 1011-P-7114 Std/Pract/Prof Xenon Bulb 3.6V Pkt2
- 1011-P-7106 Std/Pract/Prof Xenon Bulb 2.8V Pkt2
- 1011-P-7210 Std/Pract/Prof LED Bulb 3.6/2.8V Pkt1



Professional Retinoscope

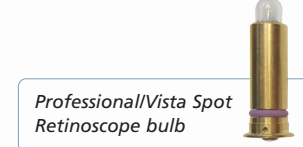
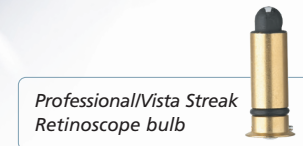
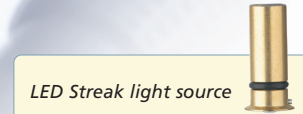
Optimised for outstanding performance with either a Streak or Spot halogen beam with a simple bulb change. Plus the LED Professional Streak Retinoscope is now available!

- **Neutralisation check (Patented)**

The only Retinoscope allowing rapid confirmation of neutralisation. You can change the beam from divergent to convergent enabling you to cross check the accuracy of the neutral point, guaranteeing the assessment is correct every time.

- **Precision magnetic control (Patented)**

Improved 360° access to a single control for both rotation and convergence adjustments. The precision movements are achieved by use of rare earth magnet technology.



Key features

- **Choice of illumination**
Choose between 600 lux of brilliant halogen illumination or the LED Retinoscope. Whichever you choose, the Professional guarantees you enough light to refract even the most difficult eyes.
- **LED Professional Streak Retinoscope**
Gives you better contrast, image quality and longer battery life.
- **Two position aperture**
A simple finger movement allows a choice of 4mm or 1.7mm aperture to optimise brightness or resolution of the retinal reflex.

Part Numbers

Professional Retinoscopes

- 1302-P-1014 3.6V Professional Streak LED Ret and case
- 1302-P-1011 3.6V Professional Streak Retinoscope in case
- 1302-P-1009 3.6V Professional Spot Retinoscope in case
- 1302-P-1013 2.8V Professional Streak LED Ret and case
- 1302-P-1010 2.8V Professional Streak Retinoscope in case
- 1302-P-1008 2.8v Professional Spot Retinoscope in case

Accessory

- 1305-P-7000 Streak Retinoscope LED blister pack

Professional Combi Retinoscope Bulbs

- 1013-P-7009 Vista/Professional Streak bulb 3.6V Pkt2
- 1013-P-7011 Professional Spot bulb 3.6V Pkt2
- 1013-P-7010 Professional Spot bulb 2.8V Pkt2

Vista Retinoscope Bulbs

- 1013-P-7009 Vista/Professional Streak bulb 3.6V Pkt2
- 1013-P-7007 Vista Spot halogen bulb 3.6V Pkt2
- 1013-P-7006 Vista Spot halogen bulb 2.8V Pkt2

Ophthalmoscope/Retinoscope Sets

You can purchase your Ophthalmoscope and Retinoscope in a slimline double handle case and add in a Lithium Double Charger.



Specialist Ophthalmoscope/Retinoscope Set



Professional Ophthalmoscope/Retinoscope Set



LED light source available with Sets



Part Numbers

Specialist Ophthalmoscope/Retinoscope Sets

- 1427-P-1104 3.6V Streak LED Ret and Specialist Ophth
- 1427-P-1063 Slimline 3.6V Streak Ret and Specialist Ophth
- 1427-P-1065 Slimline 3.6V Spot Ret and Specialist Ophth
- 1427-P-1103 2.8V Streak LED Ret and Specialist Ophth
- 1427-P-1062 Slimline 2.8V Streak Ret and Specialist Ophth
- 1427-P-1064 Slimline 2.8V Spot Ret and Specialist Ophth
- 1427-P-1116 3.6V Specialist & Combi LED only Student Set
- 1427-P-1119 3.6V Specialist Student Set LED only Volk

Professional Ophthalmoscope/Retinoscope sets

- 1427-P-1102 3.6V Streak LED Ret and Professional Ophth
- 1427-P-1059 3.6V Streak/Professional Set with 2 handles
- 1427-P-1061 Slimline 3.6V Spot Ret and Professional Ophth
- 1427-P-1101 2.8V Streak LED Ret and Professional Ophth
- 1427-P-1058 Slimline 2.8V Streak Ret & Professional Ophth
- 1427-P-1060 Slimline 2.8V Spot Ret & Professional Ophth
- 1427-P-1071 3.6V Magnetic Streak Ret/Professional Ophth and handle
- 1427-P-1117 3.6V Professional LED only Student Set
- 1427-P-1118 3.6V Professional Student Set LED only Volk

Lithium Double Charger

- 1941-P-1368 Lithium Double Charger
- 1999-P-7308 Double Charger Wall Mount Kit

Ophthalmoscope/Retinoscope Wall Units

Keeler's anti-theft designed Ophthalmoscopes and Retinoscopes have a lockable head and handle fitting so you'll always find them where you left them.



If you require a wall unit you will need to order the transformer unit which comes with the 2 x handles and each individual head.

Key features

- **Tangle-free**
The strong, coiled, tangle-free cable permits instrument use up to 3 metres from the transformer.
- **Durable**
The robust construction is ideal for busy working conditions.
- **Automated**
Automatic illumination when instruments are removed from the cradle. With LED confirmation.



Part Numbers

Wall Units

- 1964-P-2001 Double Cord Handle Power Supply
- 1132-P-1050 3.6V Specialist Ophth Head and Bulb
- 1128-P-1004 3.6V Professional Ophth in Carton
- 1132-P-1042 2.8V Specialist Ophth Head and Bulb
- 1128-P-1003 2.8V Professional Ophth in Carton
- 1302-P-1012 Professional Streak LED Retinoscope Head
- 1302-P-1007 3.6V Streak Head in Carton
- 1302-P-1005 3.6V Spot Magnetic Retinoscope
- 1302-P-1006 2.8V Streak Magnetic Retinoscope
- 1302-P-1004 2.8V Spot Magnetic Retinoscope

Accessories

• Colour Coded Grips

Add a bit of colour to your diagnostic area with colour coded grips. Available in four colours these new grips are not only fun but functional too!

Available individually or as an assorted pack of four, choose from pink, green, blue or black.



• Near Point Cards for Retinoscopy



• Keeler Slimline Handles

Spare handles for your instruments available in 3.6V Lithium rechargeable (red base) or 2.8V Battery (blue base) options.



Part Numbers

Colour Coded Grips

1901-P-7028	Pink
1901-P-7036	Green
1901-P-7044	Blue
EP29-05365	Black
1901-P-7052	Pack of four assorted Colour Coded Grips

Near Point Cards for Retinoscopy

1321-P-7021	Near Point Cards for Retinoscopy
-------------	----------------------------------

Keeler Slimline Handles

1911-P-1201	3.6V Slimline Handle
1901-P-1101	2.8V Slimline Handle

Chargers and Upgrade Kits

A two hour fast charge and over 2 hours continuous use means your instrument is always ready for use. Choose between the Lithium-ion Double or Mini Chargers.

• Lithium-ion Double Charger

The compact charger takes two handles and fits neatly into your immediate testing environment, allowing easy access to your hand held instruments. It can be desk or wall mounted.

• Lithium-ion Mini Charger

Can be connected quickly and simply to the base of your Keeler handle, making it the perfect choice for domiciliary visits or practitioners on the move. Your instruments can still be used whilst the battery is charging.



Lithium-ion Mini Charger



Double Lithium Upgrade Kit

Key features

- **Over 2 hours of continuous use**
Ideal for long examinations especially while first learning with your instrument.
- **LED displays**
LEDs indicate when battery life is low, charging or fully charged.
- **Upgrade Kits available**
Keep your existing heads and upgrade to Lithium-ion.

The Double Lithium Upgrade Kit (pictured below) includes 2 x handles and a Lithium-ion Double Charger.

The Mini Charger Upgrade Kit includes 1 x handle and a Lithium-ion Mini Charger.

Part Numbers

Lithium-ion Chargers

1941-P-1368	Lithium Double Charger
1941-P-1341	Lithium Mini Charger

Upgrade Kits

1911-P-1228	Lithium Duo Charger and 2 Slimline Handles
1911-P-1236	Slimline Handle and Mini Charger

Lithium Battery

EP39-18918	3.6V Lithium Battery
------------	----------------------

What's in the box?

Specialist

1132-P-1157
3.6V SPECIALIST
OPHTHALMOSCOPE
(RECHARGEABLE)
IN CASE

- Specialist Ophthalmoscope with Halogen Bulb
- Lithium Battery
- Spare Halogen Bulb
- Case
- User Instructions

1132-P-1149
2.8V SPECIALIST
OPHTHALMOSCOPE
IN CASE

- Specialist Ophthalmoscope with Halogen Bulb
- Spare Halogen Bulb
- Case
- User Instructions

1132-P-1181
3.6V LED SPECIALIST
OPHTHALMOSCOPE
(RECHARGEABLE)
IN CASE

- Specialist Ophthalmoscope with LED Bulb
- Lithium Battery
- Case
- User Instructions

1132-P-1173
2.8V LED SPECIALIST
OPHTHALMOSCOPE
IN CASE

- Specialist Ophthalmoscope with LED Bulb
- Case
- User Instructions

Professional

1128-P-1014
3.6V PROFESSIONAL
OPHTHALMOSCOPE
IN CASE

- Professional Ophthalmoscope with Halogen Bulb
- Lithium Battery
- Spare Halogen Bulb
- Case
- User Instructions

1128-P-1015
3.6V LED
PROFESSIONAL
OPHTHALMOSCOPE
IN CASE

- Professional Ophthalmoscope with LED Bulb
- Lithium Battery
- Case
- User Instructions

1128-P-1013
2.8V PROFESSIONAL
OPHTHALMOSCOPE
IN CASE

- Professional Ophthalmoscope with Halogen Bulb
- Spare Halogen Bulb
- Case
- User Instructions

1128-P-1008
2.8V LED
PROFESSIONAL
OPHTH IN CASE

- Professional Ophthalmoscope with LED Bulb
- Case
- User Instructions

Retinoscope

1302-P-1014
3.6V PROFESSIONAL
STREAK LED
RETINOSCOPE
AND CASE

- LED Streak Retinoscope
- Lithium Battery
- Eyebrow Extension
- Case
- User Instructions

1302-P-1011
3.6V PROFESSIONAL
STREAK
RETINOSCOPE
IN CASE

- Halogen Streak Retinoscope
- Spare Halogen Bulb
- Lithium Battery
- Eyebrow Extension
- Case
- User Instructions

1302-P-1009
3.6V PROFESSIONAL
SPOT RETINOSCOPE
IN CASE

- Halogen Spot Retinoscope
- Spare Halogen Bulb
- Lithium Battery
- Eyebrow Extension
- Case
- User Instructions

1302-P-1013
2.8V PROFESSIONAL
STREAK LED
RETINOSCOPE
AND CASE

- LED Streak Retinoscope
- Eyebrow Extension
- Case
- User Instructions

1302-P-1010
2.8V PROFESSIONAL
STREAK RETINOSCOPE
IN CASE

- Halogen Streak Retinoscope
- Spare Halogen Bulb
- Eyebrow Extension
- Case
- User Instructions

1302-P-1008
2.8V PROFESSIONAL
SPOT RETINOSCOPE
IN CASE

- Halogen Spot Retinoscope
- Spare Halogen Bulb
- Eyebrow Extension
- Case
- User Instructions

Specialist Ophthalmoscope/ Retinoscope Sets

1427-P-1104
3.6V STREAK LED
RETINOSCOPE AND
SPECIALIST
OPHTHALMOSCOPE

- LED Streak Retinoscope
- LED Specialist Ophthalmoscope
- Lithium Battery (x2)
- Eyebrow Extension
- Double Handheld Case
- User Instructions

1427-P-1063
SLIMLINE 3.6V
STREAK RETINOSCOPE
AND SPECIALIST
OPHTHALMOSCOPE

- Halogen Streak Retinoscope
- Halogen Specialist Ophthalmoscope
- Spare Halogen Streak Bulb
- Spare Halogen Specialist Bulb
- Lithium Battery (x2)
- Eyebrow Extension
- Double Handheld Case
- User Instructions

1427-P-1065
SLIMLINE 3.6V
SPOT RETINOSCOPE
AND SPECIALIST
OPHTHALMOSCOPE

- Halogen Spot Retinoscope
- Halogen Specialist Ophthalmoscope
- Spare Halogen Spot Bulb
- Spare Halogen Specialist Bulb
- Lithium Battery (x2)
- Eyebrow Extension
- Double Handheld Case
- User Instructions

1427-P-1103
2.8V STREAK LED
RETINOSCOPE AND
SPECIALIST
OPHTHALMOSCOPE

- LED Streak Retinoscope
- LED Specialist Ophthalmoscope
- Eyebrow Extension
- Double Handheld Case
- User Instructions

1427-P-1062
SLIMLINE 2.8V
STREAK RETINOSCOPE
AND SPECIALIST
OPHTHALMOSCOPE

- Halogen Streak Retinoscope
- Halogen Specialist Ophthalmoscope
- Spare Halogen Streak Bulb
- Spare Halogen Specialist Bulb
- Eyebrow Extension
- Double Handheld Case
- User Instructions

1427-P-1064
SLIMLINE 2.8V SPOT
RETINOSCOPE AND
SPECIALIST
OPHTHALMOSCOPE

- Halogen Spot Retinoscope
- Halogen Specialist Ophthalmoscope
- Spare Halogen Spot Bulb
- Spare Halogen Specialist Bulb
- Eyebrow Extension
- Double Handheld Case
- User Instructions

Student LED Specialist Ophthalmoscope/ Retinoscope Sets

1427-P-1116
3.6V SPECIALIST AND
COMBI LED ONLY
STUDENT SET

- LED Streak Retinoscope
- LED Specialist Ophthalmoscope
- Spare Halogen Spot Bulb
- Lithium Battery (x2)
- Eyebrow Extension
- User Instructions
- Dynamic Targets
- Lithium Double Charger
- Lithium Mini Charger
- Keeler Lens Cloth
- Student How to Use Ophthalmoscope and Retinoscope Book
- Romanes Occulder Rule
- Fixation Bar Budgie Stick
- Keeler Reusable Pen Torch
- Double Handheld Soft Case
- Student City Bag

1427-P-1119
3.6V SPECIALIST
STUDENT SET LED
ONLY VOLK

- LED Streak Retinoscope
- LED Specialist Ophthalmoscope
- Spare Halogen Spot Bulb
- Volk Digital Wild Field Lens
- Lithium Battery (x2)
- Eyebrow Extension
- User Instructions
- Dynamic Targets
- Lithium Double Charger
- Lithium Mini Charger
- Keeler Lens Cloth
- Student How to use Ophthalmoscope and Retinoscope Book
- Romanes Occulder Rule
- Fixation Bar Budgie Stick
- Keeler Reusable Pen Torch
- Double Handheld Soft Case
- Student City Bag

What's in the box?

Professional Ophthalmoscope/ Retinoscope Sets

1427-P-1102
3.6V STREAK LED
RETINOSCOPE AND
PROFESSIONAL
OPHTHALMOSCOPE

- LED Streak Retinoscope
- LED Professional Ophthalmoscope
- Lithium Battery (x2)
- Eyebrow Extension
- Double Handheld Case
- User Instructions

1427-P-1059
3.6V STREAK/
PROFESSIONAL SET
WITH 2 HANDLES

- Halogen Streak Retinoscope
- Halogen Professional Ophthalmoscope
- Spare Halogen Streak Bulb
- Spare Halogen Specialist Bulb
- Lithium Battery (x2)
- Eyebrow Extension
- Double Handheld Case
- User Instructions

1427-P-1061 SLIMLINE
3.6V SPOT
RETINOSCOPE AND
PROFESSIONAL
OPHTHALMOSCOPE

- Halogen Spot Retinoscope
- Halogen Professional Ophthalmoscope
- Spare Halogen Spot Bulb
- Spare Halogen Specialist Bulb
- Lithium Battery (x2)
- Eyebrow Extension
- Double Handheld Case
- User Instructions

1427-P-1101
2.8V STREAK LED
RETINOSCOPE AND
PROFESSIONAL
OPHTHALMOSCOPE

- LED Streak Retinoscope
- LED Professional Ophthalmoscope
- Eyebrow Extension
- Double Handheld Case
- User Instructions

1427-P-1058
SLIMLINE 2.8V
STREAK RETINOSCOPE
AND PROFESSIONAL
OPHTHALMOSCOPE

- Halogen Streak Retinoscope
- Halogen Professional Ophthalmoscope
- Spare Halogen Streak Bulb
- Spare Halogen Specialist Bulb
- Eyebrow Extension
- Double Handheld Case
- User Instructions

1427-P-1060
SLIMLINE 2.8V SPOT
RETINOSCOPE AND
PROFESSIONAL
OPHTHALMOSCOPE

- Halogen Spot Retinoscope
- Halogen Professional Ophthalmoscope
- Spare Halogen Spot Bulb
- Spare Halogen Specialist Bulb
- Eyebrow Extension
- Double Handheld Case
- User Instructions

1427-P-1071
3.6V MAGNETIC
STREAK RETINOSCOPE/
PROFESSIONAL
OPHTHALMOSCOPE
AND HANDLE

- Halogen Streak Retinoscope
- Halogen Professional Ophth
- 1 Handle shared between Retinoscope and Ophth
- Spare Halogen Streak Bulb
- Spare Halogen Specialist Bulb
- Lithium Battery
- Eyebrow Extension
- Double Handheld Case
- User Instructions

Student LED Professional Ophthalmoscope/ Retinoscope Sets

1427-P-1117
3.6V PROFESSIONAL
LED ONLY
STUDENT SET

- LED Streak Retinoscope
- LED Professional Ophthalmoscope
- Spare Halogen Spot Bulb
- Lithium Battery (x2)
- Eyebrow Extension
- User Instructions
- Dynamic Targets
- Lithium Double Charger
- Lithium Mini Charger
- Keeler Lens Cloth
- Student How to Use Ophth and Retinoscope Book
- Romanes Occulder Rule
- Fixation Bar Budgie Stick
- Keeler Reusable Pen Torch
- Double Handheld Soft Case
- Student City Bag

1427-P-1118
3.6V PROFESSIONAL
STUDENT SET LED
ONLY VOLK

- LED Streak Retinoscope
- LED Professional Ophthalmoscope
- Spare Halogen Spot Bulb
- Volk Digital Wild Field Lens
- Lithium Battery (x2)
- Eyebrow Extension
- User Instructions
- Dynamic Targets
- Lithium Double Charger
- Lithium Mini Charger
- Keeler Lens Cloth
- Student How to Use Ophth and Retinoscope Book
- Romanes Occulder Rule
- Fixation Bar Budgie Stick
- Keeler Reusable Pen Torch
- Double Handheld Soft Case
- Student City Bag

Wall Units

1964-P-2001
DOUBLE CORD
HANDLE
POWER SUPPLY

- Handheld Wall Mount
- 2 x Corded Handles
- 1.5mm Hexagon Wrench
- Ball Ended Hex Wrench 2mm
- Charger
- Wall Bracket, Wall Plugs & Screws
- User Instructions

1132-P-1050
3.6V SPECIALIST
OPHTHALMOSCOPE
HEAD AND BULB

- Specialist Ophthalmoscope Head with Halogen Bulb
- User Instructions

1128-P-1004
3.6V PROFESSIONAL
OPHTHALMOSCOPE
IN CARTON

- Professional Ophthalmoscope Head with Halogen Bulb

1302-P-1012
PROFESSIONAL
STREAK LED
RETINOSCOPE HEAD

- Retinoscope Head with LED Streak Bulb
- Eyebrow Extension
- User Instructions

1302-P-1007
3.6V STREAK HEAD
IN CARTON

- Retinoscope Head with Streak Bulb
- Eyebrow Extension
- User Instructions

1302-P-1005
3.6V SPOT
MAGNETIC
RETINOSCOPE

- Retinoscope Head with Spot Bulb
- Eyebrow Extension
- User Instructions

Finoff Transilluminator

2903-P-7000
FINOFF
TRANSILLUMINATOR
2.8V

- Finoff Transilluminator Head 2.8V
- User Instructions

2903-P-7001
FINOFF
TRANSILLUMINATOR
3.6V

- Finoff Transilluminator Head 3.6V
- User Instructions

Specifications

Electrical Ratings

The ophthalmoscope/retinoscope/otoscope, the power supply (EP29-32777) with its charging dock (1941-P-5289 and 1941-P-5326) together constitute a Medical Electrical System as defined in EN 60601-1.

INPUT MAINS DATA 100-240V – 50/60Hz

POWER SUPPLY RATING 12V : 2.5amps

Operation

RUN TIME Maximum 15 minutes ON
Minimum 10 minutes OFF

Instrument Heads and Handles

INPUT VOLTAGE (DC)

3V 2xAA Alkaline Batteries - BLUE

3.75V Lithium Ion Rechargeable Battery - RED (EP39-18918)

3.65V NiMH Rechargeable Battery - BLACK (1919-P-7149)

Dimensions and Weight

SPECIALIST 260 x 35 x 40mm (HxWxD)
Weight 270g

PROFESSIONAL 212 x 43 x 28mm (HxWxD)
Weight 260g

RETINOSCOPE 240 x 32 x 40mm (HxWxD)
Weight 260g

FINOFF
TRANSILLUMINATOR 203 x 44 x 29mm (HxWxD)
Weight 217g

Classification

EQUIPMENT Class II
CLASSIFICATION Type B protection against shock

Overview and intended use

The Keeler Ophthalmoscope is indicated for examining the posterior segment of the eye referred to as the fundus, in order to aid in the screening and diagnosis of retinal pathology including, but not limited to, diseases such as cataracts, papilloedema, glaucomatous disc cupping, diabetic retinopathy, hypertensive retinopathy and retinal detachments. When set to a high power and magnification, it can also be used to examine the anterior segment of the eye, which includes the eyelids, cornea, sclera, conjunctiva, iris, aqueous, crystalline lens and anterior vitreous.

The Keeler Retinoscope is indicated for the objective assessment of refractive state of the eye. By observing the retinal red reflex, it is also a means to providing information regarding the visual system, for example media and lens opacities, significant ocular aberrations and accommodative status.

The Keeler Finoff Transilluminator is indicated for the transillumination of tissue, and, in particular, scleral transillumination.



More Keeler Instruments

With over 100 years of industry experience, Keeler has become a household name among optometrists and ophthalmologists worldwide.

View our full range at

www.keeler.co.uk | www.keelerusa.com

Got a question? - Call us

UK: +44 (0)1753 857177 India: +91 99 3031 1090

USA: +1 610 353 4350 Brazil: +55 11 4302 6053

China: +86-18512119109

Keeler
— A world without vision loss —



A **Halma** company

Manufacturing address



Keeler Ltd. Clewer Hill Road Berkshire SL4 4AA UK

CE 1639